

# To Your HEALTH



**ALSO IN THIS ISSUE:**

- Welcome Back to Our Clinics
- Thank You for Donations
- Advisor Committee
- New Providers

FACE PROTECTION



WASH HANDS

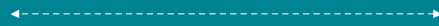
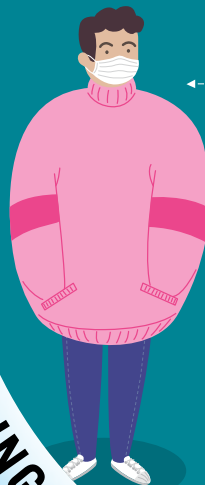
## Welcome back to our clinics

See page 2



DISINFECTANT USE

SOCIAL DISTANCING



# Welcome Back to Our Clinics

**T**he health and safety of our patients is our number one priority. We have taken precautions to make your experience coming back to our clinics a pleasant and safe one.

“We want everyone to know we are open for business,” says Tacy Hyberger, Assistant Administrator of Clinic Operations at Boone County Hospital (BCH). “We are taking precautions and want to assure our patients we are doing everything we can to make sure they have a safe experience with their healthcare provider.”

With the unexpected COVID-19 virus becoming a part of our everyday lives, it has been necessary to set restrictions and keep them in place. These restrictions are being reviewed on a monthly basis and changes will be made as needed.

The restrictions at Boone County Family Medicine (BCFM) North, South, Ogden and the Madrid Family Practice Clinic include:

- Restricting the number of patients in the clinic at the same time.
- Taking temperatures of employees and patients when they enter the clinic.
- Wearing a mask. Everyone coming to the clinics must wear a mask. If a patient does not have a mask, a home-made cloth mask will be provided for them; the mask must be returned at the end of the appointment so it can be washed.
- Asking screening questions to each employee and patient.
- Adding plexiglass at the registration areas.
- Rearranging chairs in the lobbies so they are six feet apart.
- Moving patients from the waiting area to a patient room quickly.
- Wiping down all patient rooms and equipment after each patient visit.
- Providing hand sanitizer at various locations throughout the clinics.

The process for the Walk-In Clinic at BCFM North is similar, however, testing for COVID-19 has moved to a new

location. If you have COVID-like symptoms or respiratory symptoms, pull your car into the parking lot at 104 South Story, north of the Boone County Family Medicine Walk-In Clinic. Once you are there, remain in your car and call 433-8585 to register. Someone will come out and get you or they will call you back and direct you into the clinic. Please wear a mask; if you do not have a mask, one will be provided for you. Hours of the Clinic are: 9 a.m. to 8 p.m., Monday-Friday; 9 a.m. to 7 p.m., Saturday; and 9 a.m. to 5:30 p.m., Sunday. Non-symptomatic patients should report to the Walk-In Clinic as usual.

“We are encouraging everyone to schedule their appointments, including well-child visits,” says Hyberger. “Also, if you need to refill your medication, it’s important you call for an appointment, so you do not run out.”

Safety is a priority at BCH as well, and similar restrictions have also been put into place at the Hospital. In addition, all outpatient areas are working to schedule visits back to normal volumes (certain criteria must be met). With that in mind, appointments for such things as an annual mammogram or a colonoscopy can now be scheduled. Recently, our restrictions and guidelines for inpatient and Emergency Room visitors was updated. For a complete list of those restrictions, log on to [www.boonehospital.com](http://www.boonehospital.com).

As always, the safety of our patients is our number one priority. Please abide by our guidelines and restrictions. We are doing our best to keep you safe and hope you have a pleasant experience.

**Sara Esboldt**  
takes employee  
**Kelly Schminke's**  
temperature



# COVID-19 DONATIONS

## TO BOONE COUNTY HOSPITAL & CLINICS

Audrey Hohanshelt  
 Bethany Van Dyke  
 Bomgaars  
 Boone Schools  
 BCH Auxiliary  
 BCH Board of Trustees  
 BCH Foundation  
 Betty & Steve Irons  
 Brynnley Bissen  
 Casey's General Store  
 City of Boone  
 Chalk Drawers  
 Chappy's BBQ  
 Continental Manufacturing  
 Deb & Jeff Hansen  
 Foundation  
 Diane Tott  
 Dr. Mehlhaus  
 Dr. Logan  
 Evan Purstel  
 F. William Beckwith Adult Day  
 Services  
 Girl Scout Troop 662  
 Girl Scout Troop 7102  
 Grace Community Church  
 HyVee

Iowa Communications  
 Network  
 Iowa Corn Growers Assoc.  
 Jimmy's BBQ Pit  
 Joni McPherson  
 Julie Towers  
 Libby Van Dyke  
 Marsha Anderson  
 McDonalds  
 Medical Associates  
 Pharmacy  
 Noah Roche  
 Norah Baber  
 Panera Bread  
 Paul Reese  
 Roosters Bar & Grill  
 Salvation Army  
 Savannah Witte  
 Scooters  
 Sherry Hall  
 Stonebridge Church  
 Taco Johns  
 Toby K  
 Tracie & Stephen Jochum  
 Saint Avenue Café

### PPE DONATIONS

Allison Ergenbright  
 Ann Reed  
 Audrey Breyfogle  
 Betty Cox  
 Bob Uetz  
 Bonnie Logan  
 Brittany Brown  
 Caryl Huffman  
 Cathi Wycoff  
 Christina Thompson  
 Clare Kostelnick  
 Connie Booth  
 Dana Drocher  
 Diane Davis  
 DMACC Boone Campus  
 Doris Stewart  
 Gail Johnson  
 Gail Rodgers  
 Gretchen Tighe  
 Imalee Erickson  
 Julie Venner  
 Kathi Stirling  
 Kathy Gaul  
 Kathy Pierce

Kristin Couture  
 Linda Bucheit  
 Linda Colle  
 Linda Morgan  
 M. Goddard  
 Marilou Krumm  
 Masks for Frontlines  
 Megan Ulrich  
 Melinda Teich  
 Midwest 3D Solutions  
 Mindy Kelley  
 Nancy Gieken  
 Nina Gotta  
 Patterson Dental  
 Ruth Lewis  
 Ruth Mescher  
 Seven Oaks  
 Sharon Karpin  
 Shelly Barker  
 Sheri Passwater  
 Sue Dillman  
 Teresa Cleveland  
 Terry Dorothy

# THANK YOU

## DONATIONS AS OF JULY 13, 2020

*If you have made a donation to our hospital or one of our clinics and you are not included on our list, please accept our apologies for overlooking you. We are so appreciative of all of the generous donations.*

## BECOME A PATIENT AND FAMILY ADVISOR FOR BOONE COUNTY HOSPITAL

# Together we can make the Hospital the best it can be!

If you've been a patient or a family member of a patient at Boone County Hospital (BCH) and you are open to sharing your thoughts and ideas on ways we can improve our Hospital, we want to hear from you. Patient and family advisors provide a voice to the Hospital doctors, nurses, and administrators to help improve the quality of our Hospital's care for all patients and family members.

"The Patient and Family Advisory Committee is important to our organization as it supports the Hospital's mission of improving and enhancing the health and well-being of those we serve," says Angi Ellsworth, BCH Quality Management Director and Patient and Family Advisory Committee Co-Chair. "By engaging and partnering with our patients and families, we are then able to make decisions based on patient-and-family-identified needs rather than assumptions of clinicians or Hospital staff about what patients and families want. These committee members also serve as a community liaison for the Hospital as well."

A patient and family advisor is someone who:

- Wants to help improve the quality of our Hospital's care for all patients and family members.
- Gives feedback to the Hospital based on his or her own experiences as a patient or family member.
- Helps us plan changes to improve how we take care of patients.
- Works with the Hospital for either short- or long-term commitments depending on the project.
- Volunteers his or her time.

At BCH, patient and family advisors give us feedback and ideas to help us improve the quality and safety of care we

provide. You can be an advisor if you or a family member received care at BCH in the last five years. You do not need any special qualifications to be an advisor. What's most important to us is your experience as a patient or family member. We will provide you with any additional training you need.

"The Committee was started with the purpose to have patients and families be active participants in the quality improvement efforts, safety initiatives and patient experience goals for the organization," says Angi. "Partnering with the people we serve helps guide us in our improvement strategies to ensure they meet the needs of the community."

If you are an advisor for our Hospital, you can help us in the following ways:

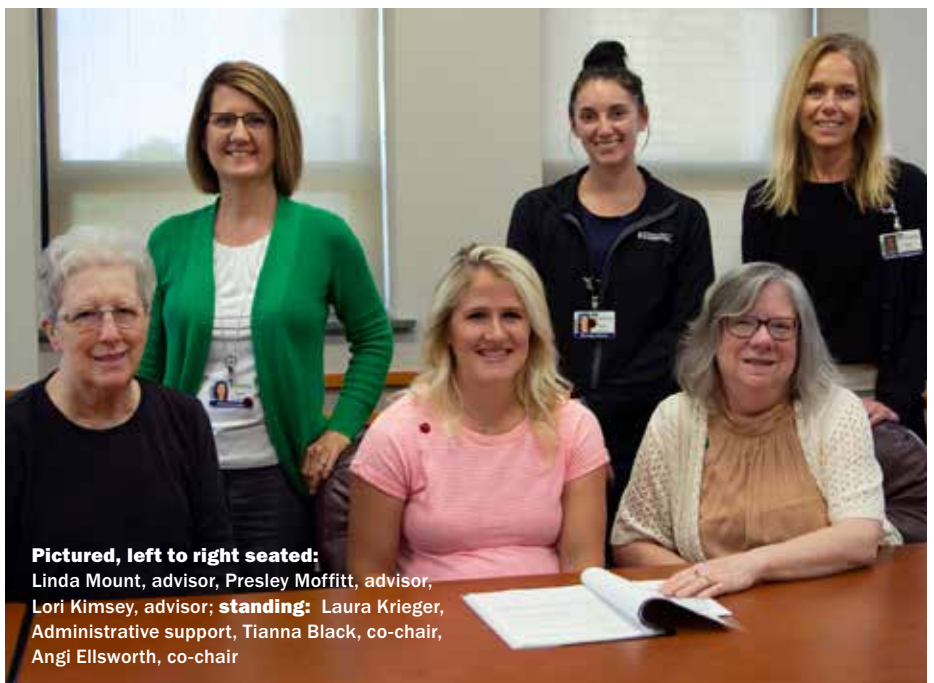
- Share your story. Advisors help by talking about their health care experiences with clinicians, staff, and other patients.
- Participate in discussion groups. Advisors tell us what it's like to be a patient at our Hospital and what we

can do to improve.

- Review or help create educational or informational materials. Advisors help review or create materials like forms, health information handouts, and discharge instructions.
- Work on short-term projects. We sometimes ask advisors to partner with us in making improvements—for example, helping to plan and design a family resource room.
- Serve on a patient and family advisory council. An advisory council discusses, and plans changes to improve the Hospital's quality and safety. Members include patients, family members, and Hospital staff.

Currently, the group meets every other month and no more than four to six times a year.

For more information about being a patient and family advisor, call Angi Ellsworth at (515) 433-8488 or email her at [aellsworth@bchmail.org](mailto:aellsworth@bchmail.org).



**Pictured, left to right seated:** Linda Mount, advisor, Presley Moffitt, advisor, Lori Kimsey, advisor; **standing:** Laura Krieger, Administrative support, Tianna Black, co-chair, Angi Ellsworth, co-chair



2020 CORPORATE SPONSORS

GOLD SPONSOR



SILVER SPONSORS

BROWN'S MEDICAL IMAGING



BRONZE SPONSORS



08.23.20

5K DUATHLON 10K

TRESTLE HUSTLE  
HIGH TRESTLE TRAIL · MADRID, IA  
RACE START - 8:00 AM

REGISTRATION: Register online  
[www.boonehospital.com/foundation](http://www.boonehospital.com/foundation)

FEE: Register before August  
for early-bird pricing  
\$30 - 5K/10K · \$40 - DUATHLON  
(Pricing increases \$10 on August 1)

MIKE SCHEUERMANN MEMORIAL

GOLF TOURNAMENT

9.24.20 | CEDAR POINTE

\$100 PER PERSON - 3 MEALS, CART  
GREENS FEE & PARTICIPANT GIFT



MAIL IN OR ONLINE REGISTRATION  
[WWW.BOONEHOSPITAL.COM](http://WWW.BOONEHOSPITAL.COM)

@bchfoundation  
515.433.8487 | [events@bchmail.org](mailto:events@bchmail.org)

**HARVEST FESTIVAL** Friday, October 30 - Additional details to come this summer.  
Follow us on social media @bchfoundation for updates.

Due to the nature of our events and the guidelines set forth for COVID-19 by the Iowa Department of Public Health and the Centers for Disease Control, BCH Foundation will make sure certain protocols are in place for our events. Therefore, we reserve the right to make changes or cancel any of our events if we do not feel the environment is safe for everyone.

# New Providers

Boone County Hospital (BCH) and its clinics are pleased to announce the addition of several new providers.

## Rheumatology



**Eman Boulis, M.D.**, Rheumatology, joined the Boone County Hospital Medical Staff in late 2019. She sees

patients at the Walk-In Clinic located at Boone County Family Medicine (BCFM) North one day a week. Dr. Boulis received her Medical Degree from Cairo University, Cairo, Egypt. She is Board Certified in Internal Medicine and Rheumatology. To schedule an appointment with Dr. Boulis, call (515) 433-8585.

## Walk-In Clinic



**Abby Bennett, DNP**, began working at the Walk-In Clinic at BCFM North in the Spring 2020. She received

a Doctor of Nursing from Creighton University. Abby is also an Emergency Room provider at UnityPoint Health, Des Moines. No appointment is needed to be seen in the Walk-In Clinic.

## Walk-In Clinic



**Antoinette (Tonie) Thompson, DNP**, began working in the Walk-In Clinic at BCFM North in July. She received a Doctor

of Nursing from the University of South Alabama, Mobile, Alabama. Tonie is also an Emergency Room locum for Wapiti. No appointment is needed to be seen in the Walk-In Clinic.

## Radiology



**Alexander Harvin, M.D.**, McFarland Clinic, is now providing Radiology services for Boone County Hospital.

He is among eight other McFarland radiologists who also provide radiology services for BCH. Dr. Harvin received his Medical Degree from the Medical University of South Carolina, Charleston, South Carolina.

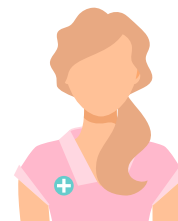
## Dermatology



**Janeen Busch, ARNP**, will start providing Dermatology services at Boone County Family Medicine South in August

two days a week. She received her degree from Graceland University, Independence, Missouri. If you would like to schedule an appointment with Janeen, call (515) 432-2335.

For more information about the physicians and providers at Boone County Hospital, log on to [www.boonehospital.com](http://www.boonehospital.com).



# Medical Staff



## Anesthesia

Genev Calek, CRNA  
Kayla Campbell, CRNA  
Rebecca Clark, CRNA

## Clinical Psychology

William Martin, Jr., Ph.D.....433-0343

## Dermatology

Janeen Busch, ARNP.....432-2335

## Emergency

Timothy Evert, D.O., ED Medical Director  
Katie Kuehner, D.O.  
Jason Sheffler, D.O.

## Endocrinology

Diana Wright, M.D.....432-2335

## Family Practice

Joshua Anderson, D.O.....432-2335  
Tammy Chance, D.O.....275-2417  
Josh Chrisopulos, PA-C.....795-4300  
Devi Dunker, D.O.....432-2335  
Trishia Filipiak, M.D.....432-4444  
Mel Hilsabeck, ARNP.....795-4300  
Rodney Logan, M.D.....432-4444  
Brian Mehlhaus, M.D.....432-4444  
Eric Peterson, M.D.....432-2335  
Rienera Sivesind, M.D.....432-4444  
Scott Thiel, M.D.....432-2335  
Dawn Tingwald, ARNP.....275-2417

## General Surgery

Jeffrey Maire, D.O.....433-8500  
Jay Seligman, D.O.....433-8500

## OB/Gyn

Tracey McIntire, D.O.....433-8700  
Rienera Sivesind, M.D.....432-4444

## Pain Clinic

Christopher Hanson, CRNA, MS,  
ARNP.....212-2420

## Pathology

Trisha Andersen, D.O.  
Christopher Johnson, M.D.  
Jamie Wedert, M.D.

## Podiatry

John Erickson, D.P.M., AACFAS,  
FACFAOM.....433-8500

## Radiology

Randy Anderson, M.D.  
Grant Goldsberry, M.D.  
Dean Gute, M.D.  
Alexander Harvin, M.D.  
Douglas Lake, M.D.  
David Larson, M.D.  
John McGarity, D.O.  
Charles Olson, M.D.  
David Sosnouski, M.D.

## Rheumatology

Eman Boulis, M.D.....433-8585

## Walk-In Clinic

Abby Bennett, DNP  
Josh Chrisopulos, PA-C  
Mindy Royster, ARNP  
Antoinette Thompson, DNP

## Wound and Hyperbaric Center

Melinda Altman, ARNP.....433-8740  
John Erickson, D.P.M., AACFAS,  
FACFAOM.....433-8740  
Scott Thiel, M.D.....433-8740

## BCH OUTREACH SERVICES

## Ophthalmology

Nicolas Hamouche, M.D.....239-4460

## BCH SPECIALTY CLINIC...433-8300

## Allergy

Jay Brown, M.D., McFarland Clinic

## APO

Rick Volk, CO, CL, American Prosthetics

## Audiology

Lisa Gardner, MS, CCC-A, Mercy ENT

## Cardiology

Amar Nath, M.D., UnityPoint Cardiology  
Rakshak Sarda, M.D., Iowa Heart Center

## Ear, Nose, Throat

Cory Mineck, M.D., Mercy ENT  
Matt Morgan, M.D., Mercy ENT

## Hepatology

Blake Williams, ARNP, UnityPoint

## Nephrology

Jacob Alexander, M.D., McFarland Clinic

## Neurology

Michael Kitchell, M.D., McFarland Clinic

## Oncology

Joseph Merchant, M.D., McFarland Clinic

## Ophthalmology

Louis Scallon, M.D., Wolfe Eye Clinic

## Orthopedic Surgery

Steven Aviles, M.D., Iowa Ortho  
Jared Carter, PA-C, Iowa Ortho  
Todd Harbach, M.D., Iowa Ortho  
Kraig Holtorf, PA-C, Iowa Ortho  
Casey Howe, PA-C, Iowa Ortho  
Timothy Kenney, M.D., Iowa Ortho  
Craig Mahoney, M.D., Iowa Ortho  
Benjamin Paulson, M.D., Iowa Ortho

## Physical Medicine and Rehab

Todd Troll, M.D., Iowa Clinic

## Podiatry

Todd Miller, D.P.M.

## Pulmonary Medicine

Greg Hicklin, M.D., The Iowa Clinic  
Katrina Guest, M.D., The Iowa Clinic

## Vascular Surgery

Nicholas Southard, D.O., Iowa Clinic

## Discrimination is Against the Law

Boone County Hospital complies with applicable Federal civil rights laws and does not exclude people or treat them differently because of race, color, national origin, age, religion, sex, gender identity, sexual orientation, or disability.

# Programs & Services



▶ **Boone Blood Drive**

September 14 and November 16, 1 to 6 p.m., Central Christian Church. If you are interested in donating blood, call (800) 287-4903. The Blood Drive is bi-monthly. Sponsored by the BCH Auxilliary.

▶ **Boone County Nutrition Programs**

Boone County provides meals to individuals 60-plus and older throughout the county. For more information on the Home Delivered Meal and Congregate Meal Programs, call 432-1127.

▶ **Car Seat Safety Checks**

If you would like a car seat safety technician to install your child's safety seat correctly, call 433-8196.

▶ **Childbirth Education**

Covered topics are childbirth preparation, infant care and breastfeeding. Snacks provided. Call 433-8400 to find out when the next scheduled class will be held.

▶ **Diabetes Support Group**

This group does not meet in the summer; it will resume in September.

▶ **Educating and Empowering U**

This series typically meets the third Tuesday of each month. Topics vary and include everything from health and wellness to updates on community happenings. A complimentary lunch will be provided. To register, call 433-8470 or email sbehn@bchmail.org.

▶ **Home Care Services**

Provides a wide range of home care and health promotion programs to better the community's health. For more information, call 432-1127.

▶ **Hospice Rooms**

Family and Friends Patient Comfort Rooms are available for individuals diagnosed with a life-limiting illness.

▶ **Lab Wellness Profiles**

Offered seven days a week, 7 to 10:30 a.m., BCH Lab. A variety of blood tests are available. Cost is low; no insurance filed. For more information, call 433-8170.

▶ **Outpatient Nutritional Services**

A Boone County Hospital dietitian can provide you with a nutritional need's assessment, help you develop healthier eating habits, plan healthy menus and lose weight. Call 433-8624.

▶ **Sibling Class**

This sibling class for 2 to 10-year old's helps children prepare and accept the arrival of a newborn. Call 433-8400 to find out when the next scheduled class will be held.